

CITY OF MORENO VALLEY

HIKES TO THE TOP

Hidden Springs Trail
 9801 Hidden Springs Drive
 Distance - 3.3 miles
 Elevation Change - 160ft

Box Springs Mountain
 Elevation: 3,100ft

Box Springs "M" Trail
 23100 Cougar Canyon Drive
 Distance - 4.8 miles
 Elevation Change - 1,370ft

Olive Mountain Trail
 11900 Slawson Avenue
 Distance - 3.6 miles
 Elevation Change - 1,100ft

Olive Hill
 Elevation: 3,000ft

Kalmia Hill
 Elevation: 2,400ft

San Timoteo Canyon Trail
 11150 Redlands Boulevard
 Distance - 5.6 miles
 Elevation Change - 350ft

Pettit Hill
 Elevation: 2,050ft

Terri Peak Trail
 15261 Legendary Drive
 Distance - 7.8 miles
 Elevation Change - 850ft

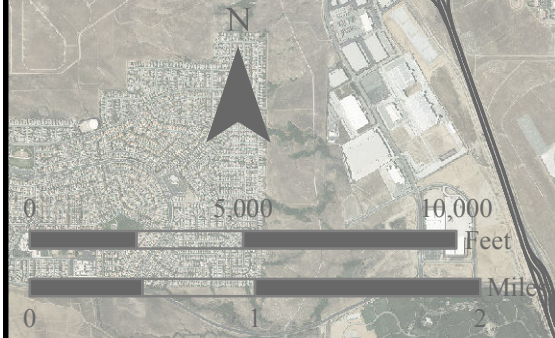
Lake Perris Trail
 28500 John F. Kennedy Drive
 Distance - 7.2 miles
 Elevation Change - 480ft

Mt. Russell
 Elevation: 2,550ft

MARCH ARB

Lake Perris State Recreation Area

LAKE PERRIS



Map Produced by Moreno Valley
 Geographic Information System
 Geographic Information in:
 State Plane NAD 83 California Zone 6 Feet
 G:\ArcMap\Parks\CityMapHike_11x17
 September 23, 2015

The information shown on this map was compiled from the Riverside County GIS and the City of Moreno Valley GIS. The land base and facility information on this map is for display purposes only and should not be relied upon without independent verification as to its accuracy. Riverside County and City of Moreno Valley will not be held responsible for any claims, losses or damages resulting from the use of this map.

LEGEND

- Hiking Trails (Distance is Roundtrip)
- - - Aqueduct Bikeway/Route
- Roads
- Parks
- Schools
- City Bounds